

# Bismarck Civic Center

Exceeding Expectations through Engaging Experiences



## Meeting Room: Birch

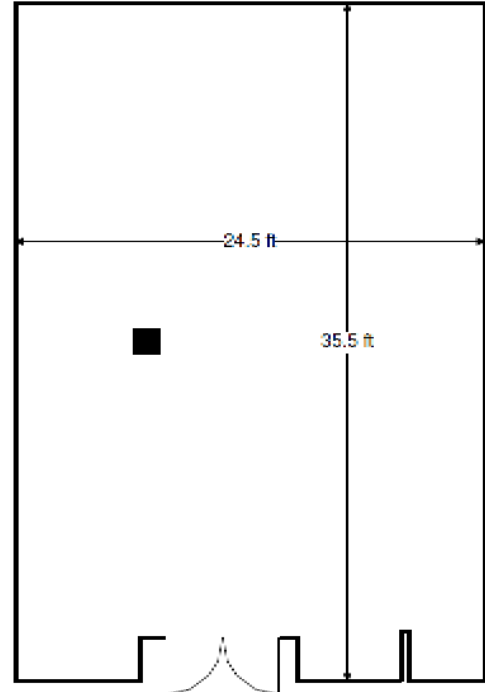
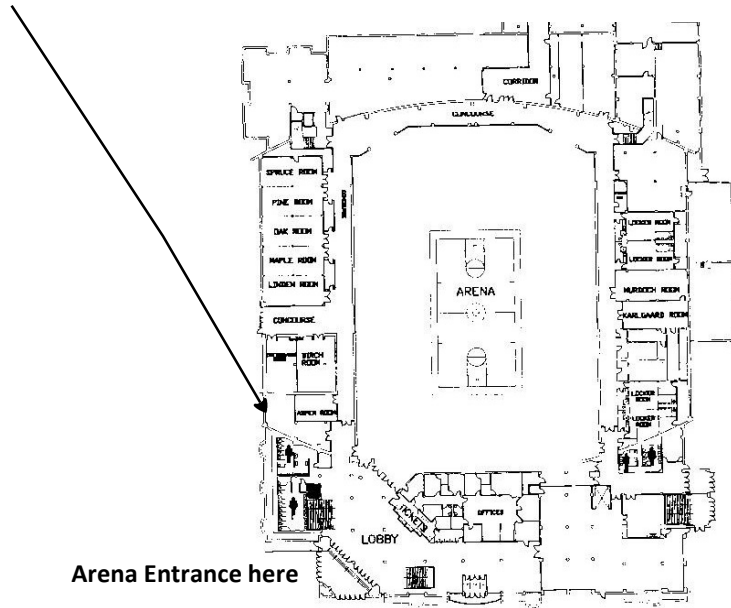
**Dimensions:** 24 x 36

**Ceiling Height:** 10'

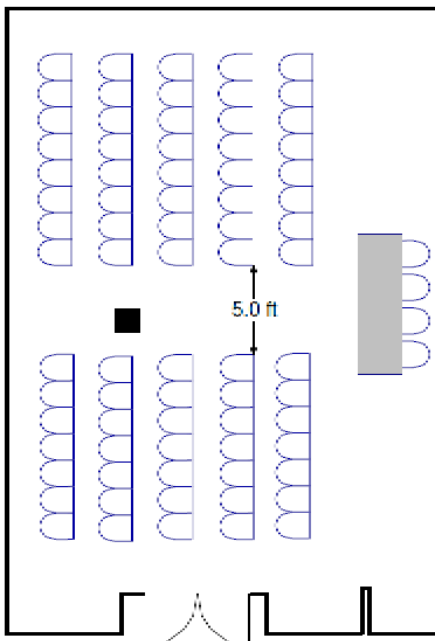
**Mon-Fri Rate:** \$125

**Weekend Rate:** \$175

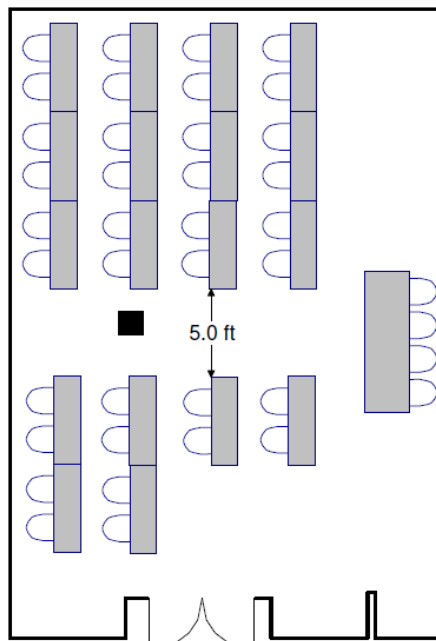
Please call 701.355.1380 for available dates and times!



**Theater Seating**  
Capacity: 80



**Classroom Seating**  
Capacity: 40



**Banquet Seating**  
Capacity: 50

